

SKYVIEW

PRESCOTT VALLEY



hello



SKYVIEW

Community Information



GENERAL INFORMATION

6915 N Full Quiver Trail, Prescott Valley, AZ
86315 Total Homes: 108

SALES OFFICE HOURS

Monday – Sunday: 10am – 5pm
Wednesday: 12pm – 5pm

HOA DUES

Antelope Park Homeowners Association:
\$50/month (includes common area maintenance)

COMMUNITY INFO

Internet – Sparklight
Trash – Waste Management
Electric – APS
Water / Sewer – Town of Prescott Valley

AMENITIES

Open Space Common Area

SCHOOLS

Coyote Springs Elementary School
Glassford Hill Middle School
Bradshaw Mountain High School

PREFERRED LENDING PARTNER

Intercap Lending – Shyann Eckel
480-233-3273 | shyann@intercaplending.com

Unique Features

3-Car Front-Facing Garages
All Single Level Homes
9' Ceilings with 8' Interior Doors
Smart Home Features

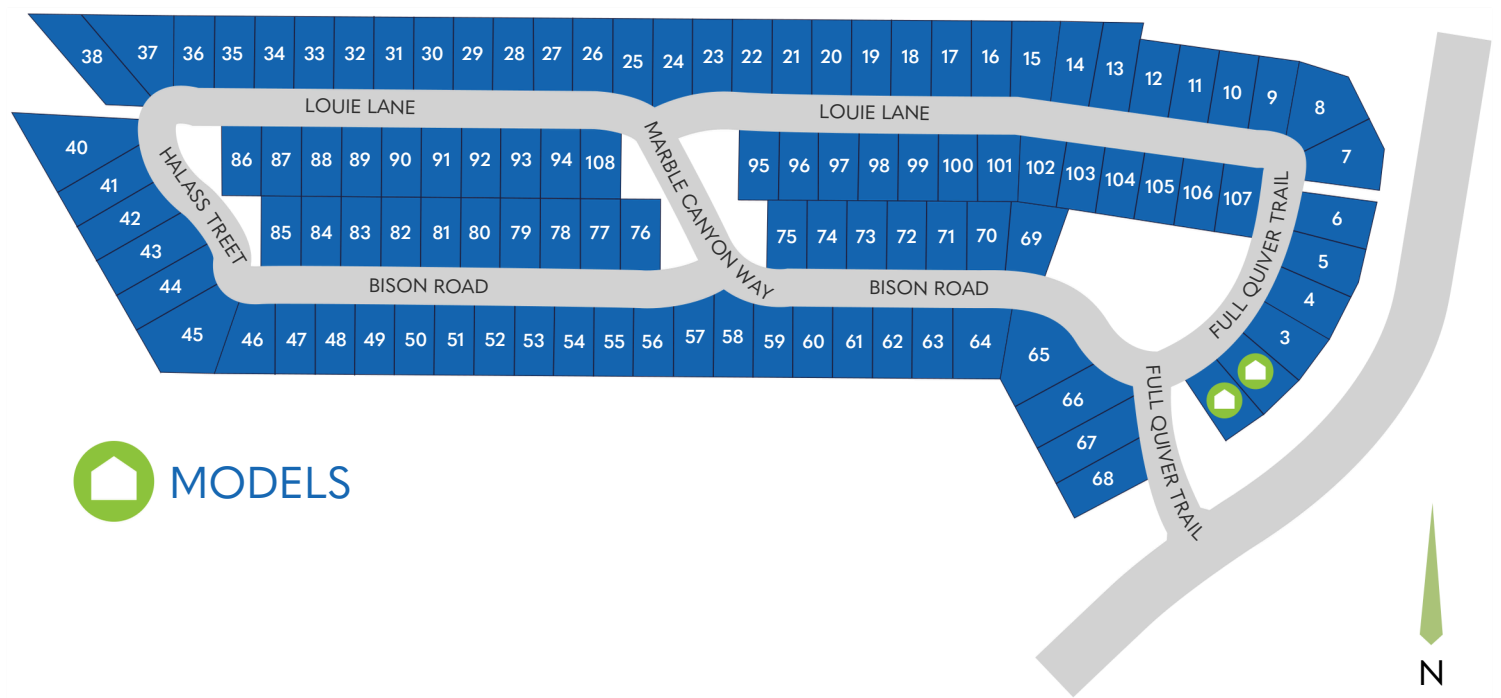
Plans, specs, features and community info subject to change without notice. 11.14.25
Offered for sale by Valley Peaks Realty Arizona Broker # BR679355000. LIC # LC638308005. ROC #349994

6915 N Full Quiver Trail, Prescott Valley, AZ 86315 | (928) 774-3826
Offered for sale by Valley Peaks Realty | ECCOHomesAZ.com



SKYVIEW

Community Site Plan



All areas, dimensions and finishes are approximate and subject to change without notice.
Offered for sale by Valley Peaks Realty Arizona Broker # BR679355000 LIC # LC638308005 ROC #349994

6915 N Full Quiver Trail, Prescott Valley, AZ 86315 | (928) 774-3826
Offered for sale by Valley Peaks Realty | ECCOHomesAZ.com



SKYVIEW

Included Features Sheet



IMPRESSIVE INTERIORS

- Spacious 9' Ceilings
- 8' Two-Panel Shaker Interior Doors
- Kwikset® Front Door Hardware Lever-Style Interior Door Hardware in Brushed Nickel
- 5.25" Baseboards and 3.25" Door Casings
- Tile in Entry, Kitchen, Bathrooms and Laundry Room
- Durable Shaw® Carpeting in Bedrooms, Great Room, Dining Room and Closets
- Lighting Fixtures in Brushed Nickel
- Decora Light Switches in White
- Standard Skip Drywall Finish with Square Corners
- Ceiling Fan Brace with Wall Switch at Great Room and Primary Bedroom
- Electrical Package with Two Cable Hookups, Two Cat5 Hookups, and Conduit for Future Solar
- Raised Outlets at 72" in Great Room and Primary Bedroom for Future TV

WELL-APPOINTED KITCHENS

- Full Overlay Shaker Cabinetry with 36" Uppers
- Quartz Countertop with Stainless Steel Undermount Dual Bowl Kitchen Sink
- Stainless Steel Pull-Down Faucet and 1/3 HP Garbage Disposal
- Stainless Steel Appliances

LUXURY BATHROOMS

- Cultured Marble Countertops with Rectangle Undermount Sink in All Bathrooms
- Executive Height Countertops in Bathrooms
- Elongated, Comfort-Height Toilets
- Primary Suite Marble Surround Shower with Fiberglass Pan, Clear 3/8" Glass Enclosure
- Fiberglass Tub/Shower Inserts in Secondary Baths
- Brushed Nickel Bathroom Fixtures and Accessories

DISTINCTIVE EXTERIORS

- Modern Exteriors with Acrylic Stucco, Long-Lasting LP Siding and Board & Batten Detail (Style Per Elevation)
- Garage Coach Lights
- Paver Driveways, Walkways and Patio
- 8' Front Entry Door with Lite Panel (Style Per Elevation)
- Flush Metal Garage Door, Uninsulated, with Glass Accents (Style Per Elevation)
- Low-Maintenance Front Yard Landscaping Package Two Hose Bibbs (Front and Back Per Plan)
- 5' Block Privacy Fencing in Backyard with Gate
- Asphalt Shingle Roof with Gutters and Downspouts
- White Vinyl Low-E Windows

ENERGY SAVING FEATURES

- Spray Foam Insulation: Wall (5") and Ceiling (8")
- ERV (Energy Recovery Ventilator) for Energy-Efficient Fresh Air Exchanges
- 40-Gallon Electric Hot Water Heater with Recirculating Water System
- Electric Range
- 14.3 SEER2 Heat Pump System
- Programmable Wi-Fi Thermostat
- 10-Year Structural Warranty
- ENERGY STAR®-Compliant Home and Appliances
- Recessed Can Lighting with LED Bulbs
- Low VOC Paint

HOME AUTOMATION

- Google Nest® Video Doorbell
- Google Nest® Hub 2nd Generation
- ecobee3® Lite Smart Thermostat Pro
- Wi-Fi Garage Door Opener with Two Remotes
- Front Door Smart Keypad Lock

All areas, dimensions and finishes are approximate and subject to change without notice.

Offered for sale by Valley Peaks Realty Arizona Broker # BR679355000 LIC # LC638308005 ROC #349994

6915 N Full Quiver Trail, Prescott Valley, AZ 86315 | (928) 774-3826

Offered for sale by Valley Peaks Realty | ECCOHomesAZ.com

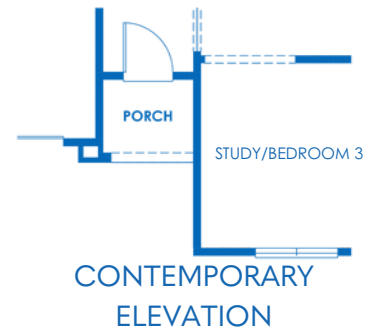
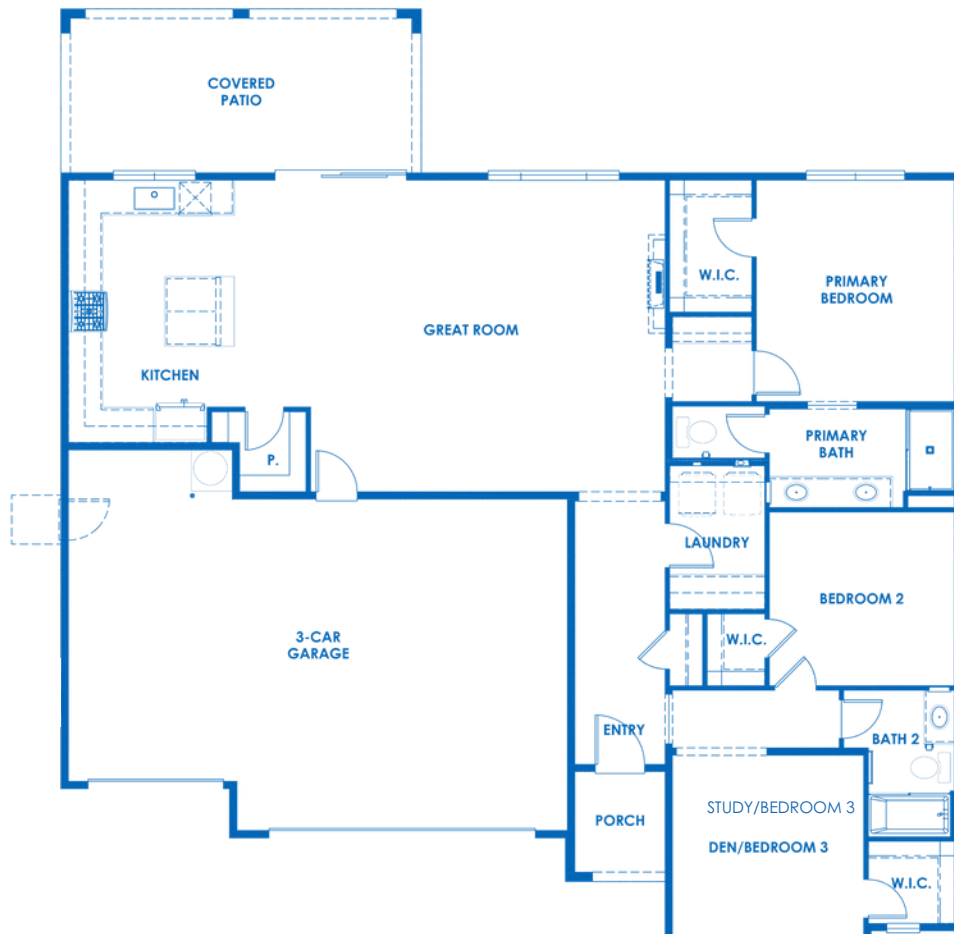


SKYVIEW

Plan 1653 Floor Plan



1,653 Sq. Ft. | 2 Beds + Study – 3 Beds | 2 Baths | 3-Car Garage



All areas, dimensions and finishes are approximate and subject to change without notice.

Offered for sale by Valley Peaks Realty Arizona Broker # BR679355000 LIC # LC638308005 ROC #349994

6915 N Full Quiver Trail, Prescott Valley, AZ 86315 | (928) 774-3826

Offered for sale by Valley Peaks Realty | ECCOHomesAZ.com



SKYVIEW

Plan 1653 Elevations



1,653 Sq. Ft. | 2 Beds + Study – 3 Beds | 2 Baths | 3-Car Garage

FARMHOUSE ELEVATION



CONTEMPORARY ELEVATION



All areas, dimensions and finishes are approximate and subject to change without notice.

Offered for sale by Valley Peaks Realty Arizona Broker # BR679355000 LIC # LC638308005 ROC #349994

6915 N Full Quiver Trail, Prescott Valley, AZ 86315 | (928) 774-3826

Offered for sale by Valley Peaks Realty | ECCOHomesAZ.com

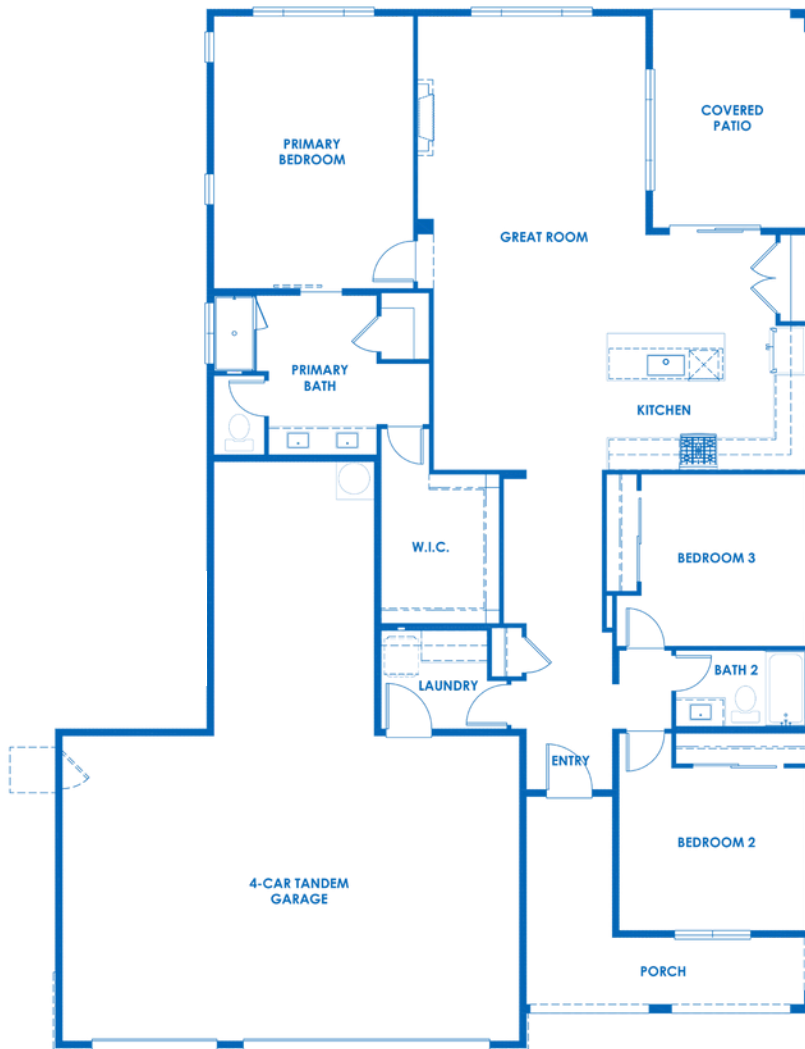


SKYVIEW

Plan 1765 Floor Plan



1,765 Sq. Ft. | 3 Beds | 2 Baths | 4-Car Tandem Garage



CONTEMPORARY
ELEVATION

All areas, dimensions and finishes are approximate and subject to change without notice.

Offered for sale by Valley Peaks Realty Arizona Broker # BR679355000 LIC # LC638308005 ROC #349994

6915 N Full Quiver Trail, Prescott Valley, AZ 86315 | (928) 774-3826

Offered for sale by Valley Peaks Realty | ECCOHomesAZ.com



SKYVIEW

Plan 1765 Elevations



1,765 Sq. Ft. | 3 Beds | 2 Baths | 4-Car Tandem Garage

FARMHOUSE ELEVATION



CONTEMPORARY ELEVATION



All areas, dimensions and finishes are approximate and subject to change without notice.

Offered for sale by Valley Peaks Realty Arizona Broker # BR679355000 LIC # LC638308005 ROC #349994

6915 N Full Quiver Trail, Prescott Valley, AZ 86315 | (928) 774-3826

Offered for sale by Valley Peaks Realty | ECCOHomesAZ.com

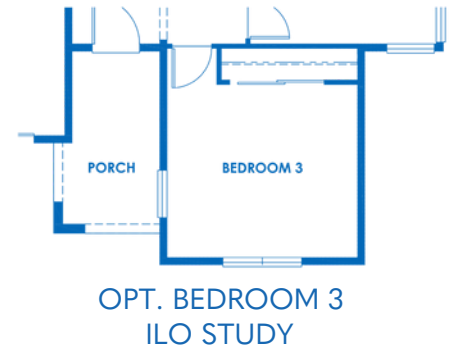


SKYVIEW

Plan 1846 Floor Plan



1,846 Sq. Ft. | 2 Beds + Study – 3 Beds | 2 Baths | 3-Car Garage



All areas, dimensions and finishes are approximate and subject to change without notice.

Offered for sale by Valley Peaks Realty Arizona Broker # BR679355000 LIC # LC638308005 ROC #349994

6915 N Full Quiver Trail, Prescott Valley, AZ 86315 | (928) 774-3826

Offered for sale by Valley Peaks Realty | ECCOHomesAZ.com



SKYVIEW

Plan 1846 Elevations



1,846 Sq. Ft. | 2 Beds + Study – 3 Beds | 2 Baths | 3-Car Garage

FARMHOUSE ELEVATION



CONTEMPORARY ELEVATION



All areas, dimensions and finishes are approximate and subject to change without notice.

Offered for sale by Valley Peaks Realty Arizona Broker # BR679355000 LIC # LC638308005 ROC #349994

6915 N Full Quiver Trail, Prescott Valley, AZ 86315 | (928) 774-3826

Offered for sale by Valley Peaks Realty | ECCOHomesAZ.com

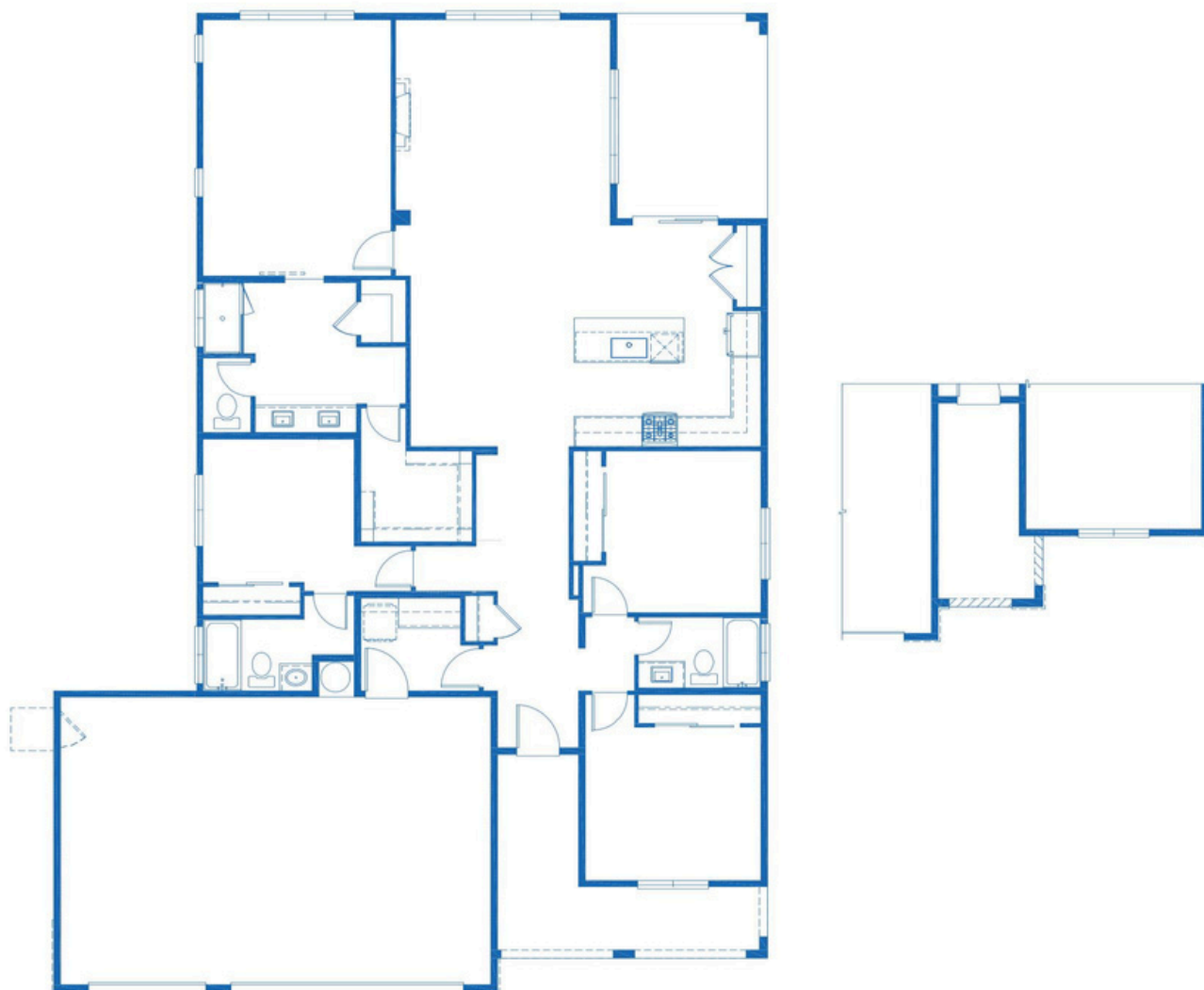


SKYVIEW

Plan 1958 Floor Plan



1,958 Sq. Ft. | 4 Beds | 3 Baths | 3-Car Tandem Garage



6915 N Full Quiver Trail, Prescott Valley, AZ 86315 | (928) 774-3826

Offered for sale by Valley Peaks Realty | ECCOHomesAZ.com



SKYVIEW

Plan 1958 Elevations



1,958 Sq. Ft. | 4 Beds | 3 Baths | 3-Car Tandem Garage

FARMHOUSE ELEVATION



CONTEMPORARY ELEVATION



All areas, dimensions and finishes are approximate and subject to change without notice.

Offered for sale by Valley Peaks Realty Arizona Broker # BR679355000 LIC # LC638308005 ROC #349994

6915 N Full Quiver Trail, Prescott Valley, AZ 86315 | (928) 774-3826

Offered for sale by Valley Peaks Realty | ECCOHomesAZ.com

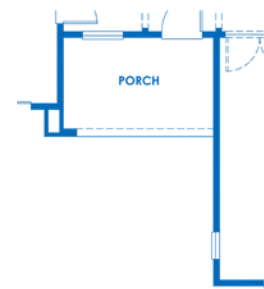
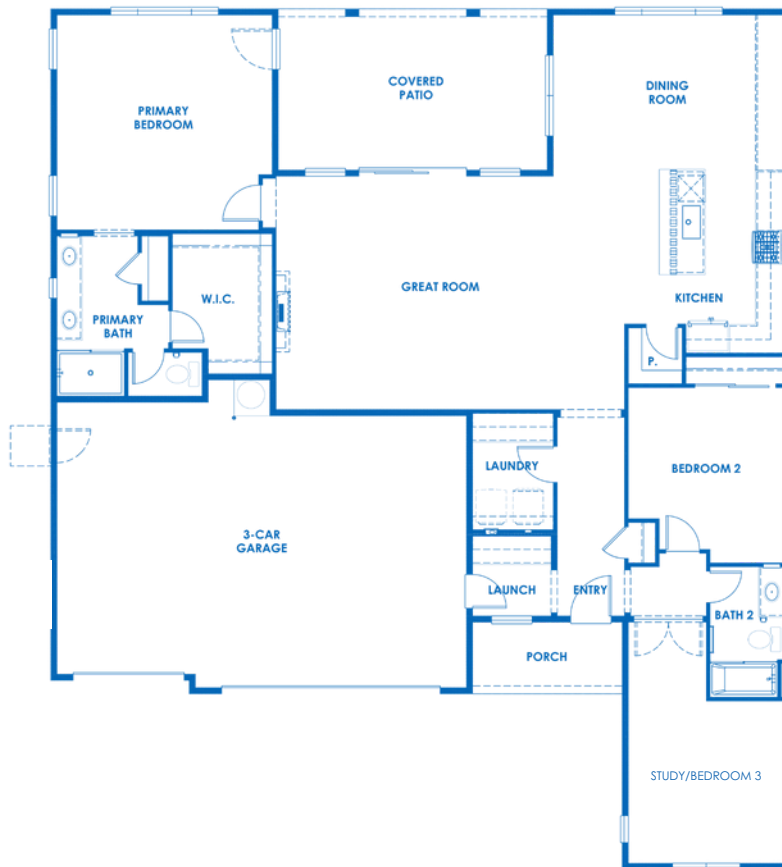


SKYVIEW

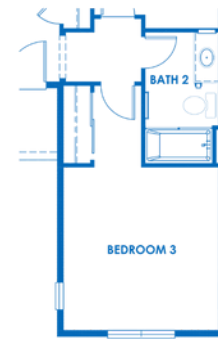
Plan 2002 Floor Plan



2,002 Sq. Ft. | 2 Beds + Study – 3 Beds | 2 Baths | 3-Car Garage



CONTEMPORARY
ELEVATION



OPT. BEDROOM 3 I/O STUDY

All areas, dimensions and finishes are approximate and subject to change without notice.

Offered for sale by Valley Peaks Realty Arizona Broker # BR679355000 LIC # LC638308005 ROC #349994

6915 N Full Quiver Trail, Prescott Valley, AZ 86315 | (928) 774-3826

Offered for sale by Valley Peaks Realty | ECCOHomesAZ.com



SKYVIEW

Plan 2002 Elevations



2,002 Sq. Ft. | 2 Beds + Study – 3 Beds | 2 Baths | 3-Car Garage

FARMHOUSE ELEVATION



CONTEMPORARY ELEVATION



All areas, dimensions and finishes are approximate and subject to change without notice.

Offered for sale by Valley Peaks Realty Arizona Broker # BR679355000 LIC # LC638308005 ROC #349994

6915 N Full Quiver Trail, Prescott Valley, AZ 86315 | (928) 774-3826

Offered for sale by Valley Peaks Realty | ECCOHomesAZ.com

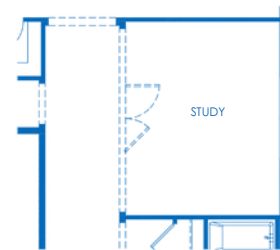
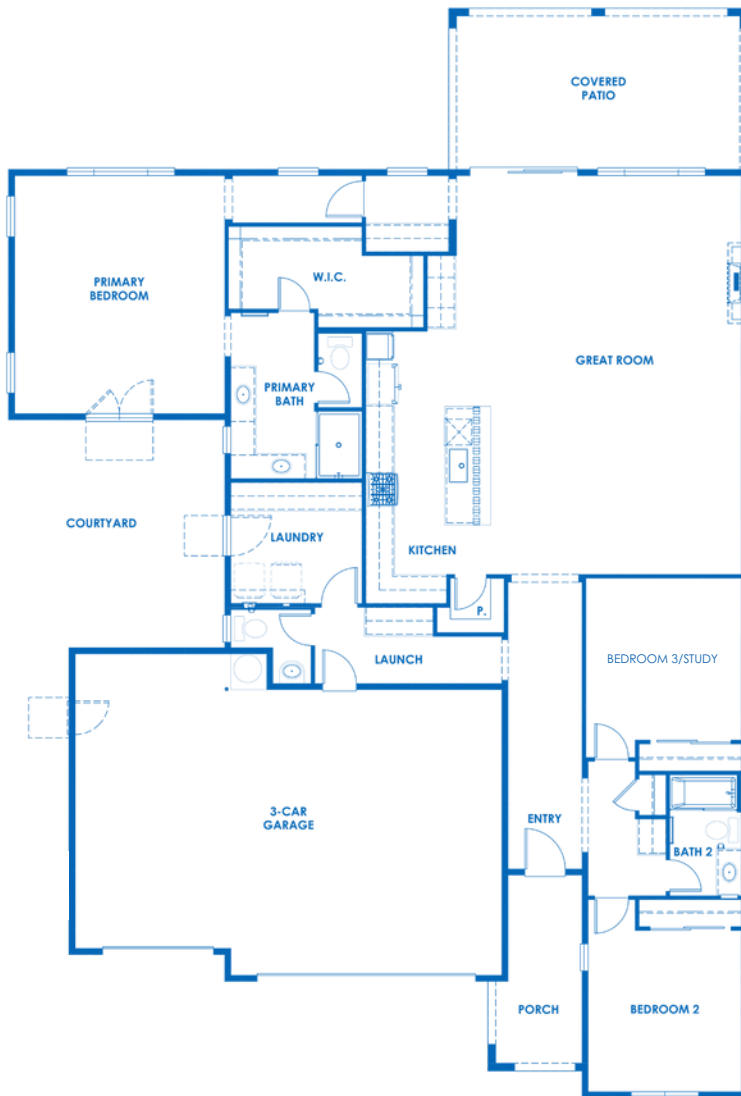


SKYVIEW

Plan 2254 Floorplan



2,254 Sq. Ft. | 3 Beds | 2.5 Baths | 3-Car Garage



OPT. BEDROOM 3
ILO STUDY

All areas, dimensions and finishes are approximate and subject to change without notice.

Offered for sale by Valley Peaks Realty Arizona Broker # BR679355000 LIC # LC638308005 ROC #349994

6915 N Full Quiver Trail, Prescott Valley, AZ 86315 | (928) 774-3826

Offered for sale by Valley Peaks Realty | ECCOHomesAZ.com



SKYVIEW

Plan 2254 Elevations



2,254 Sq. Ft. | 3 Beds | 2.5 Baths | 3-Car Garage

FARMHOUSE ELEVATION



CONTEMPORARY ELEVATION



All areas, dimensions and finishes are approximate and subject to change without notice.

Offered for sale by Valley Peaks Realty Arizona Broker # BR679355000 LIC # LC638308005 ROC #349994

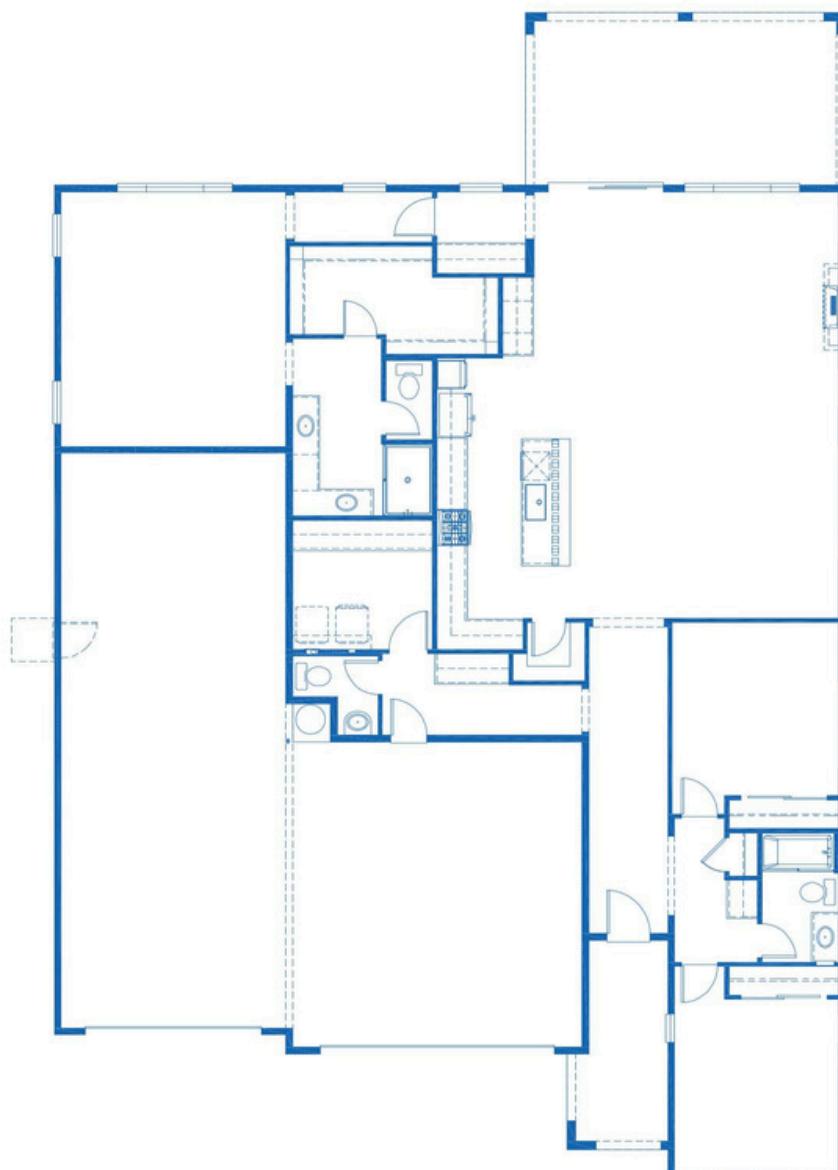
6915 N Full Quiver Trail, Prescott Valley, AZ 86315 | (928) 774-3826

Offered for sale by Valley Peaks Realty | ECCOHomesAZ.com



SKYVIEW

Plan 2254 RV Floor Plan



SKYVIEW

Plan 2254 RV Elevations



2,254 Sq. Ft. | 3 Beds | 2.5 Baths | 2-Car + RV Garage

FARMHOUSE ELEVATION



CONTEMPORARY ELEVATION



All areas, dimensions and finishes are approximate and subject to change without notice.

Offered for sale by Valley Peaks Realty Arizona Broker # BR679355000 LIC # LC638308005 ROC #349994

6915 N Full Quiver Trail, Prescott Valley, AZ 86315 | (928) 774-3826

Offered for sale by Valley Peaks Realty | ECCOHomesAZ.com

